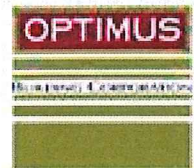




11172



Westmount Commercial Site
Westland Street @ Westamount Road
Okotoks Alberta

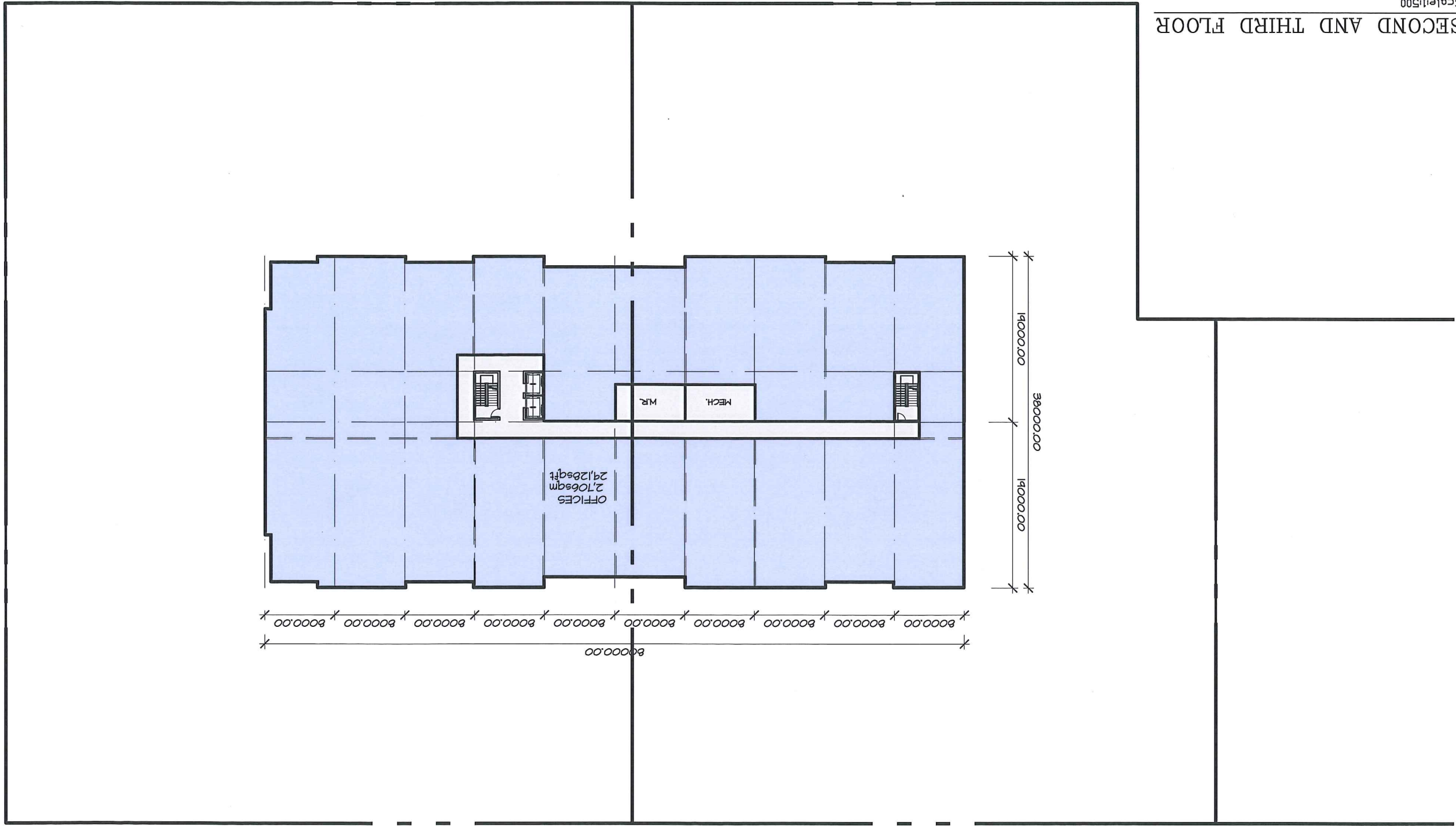




Westmount Commercial Site
 Westland Street @ Westmount Road
 Alberta Okotoks

September 1, 2011

Scale: 1:500
 SECOND AND THIRD FLOOR

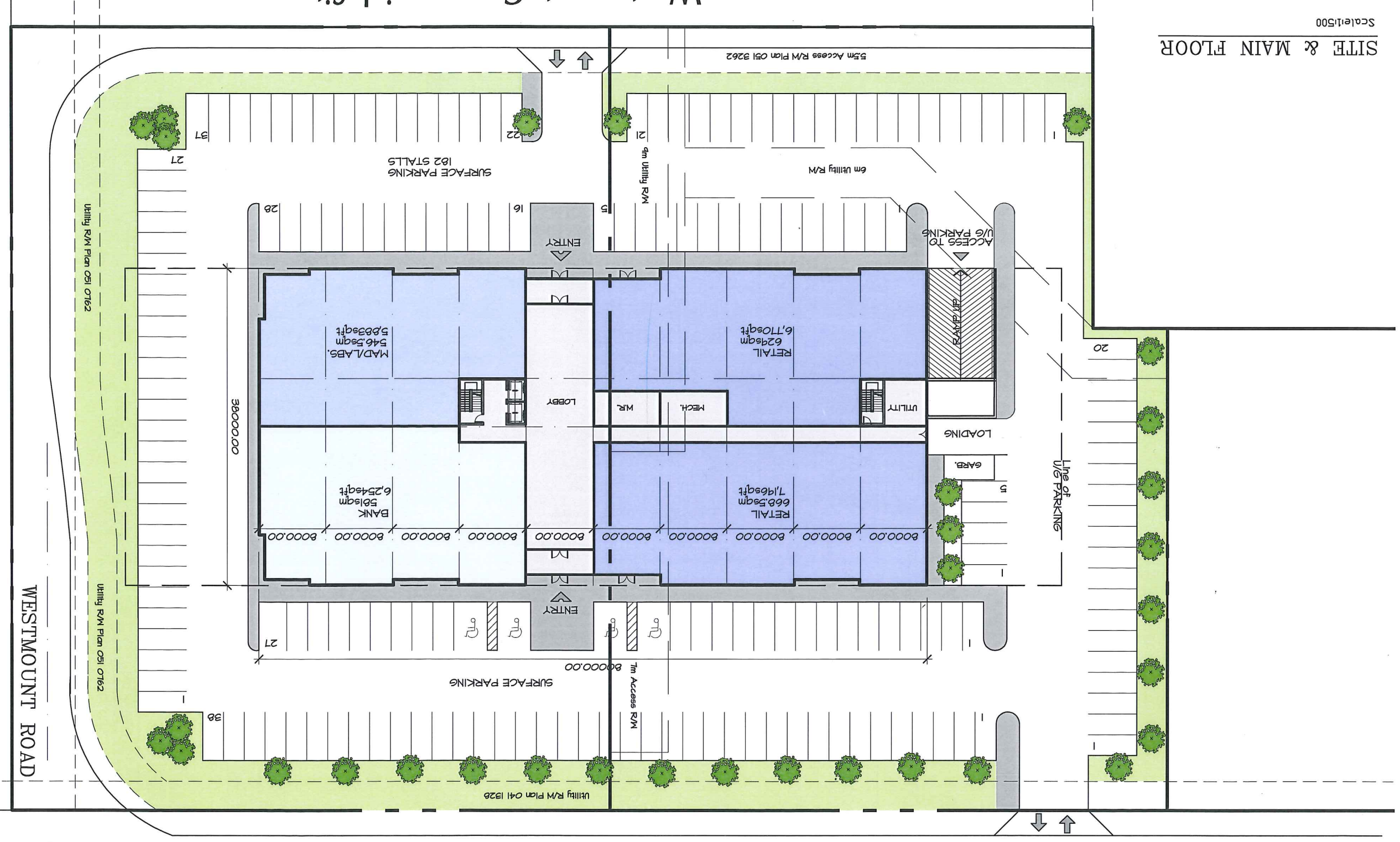


Westland Street @ Westmount Road
 Westmount Commercial Site

11172

Scale: 1:500

SITE & MAIN FLOOR



September 1, 2011

GR005 AREA:
 MAIN FLOOR: 2,967sqm
 2nd & 3rd FLOOR: 2,967sqm x 2
 TOTAL GR005 AREA: 6,901sqm
 (above grade)
 PARKING REQUIRED:
 8,901sqm x 0.55 = 4,895.55 P.S.
 PARKING REQUIRED: 445 PARKING STALL
 PARKING PROVIDED:
 UNDERGROUND PARKADE:
 2 LEVELS 2X 150 = 300 STALLS
 SURFACE PARKING 182 STALLS
 TOTAL PARKING PROVIDED
 482 P.S.

